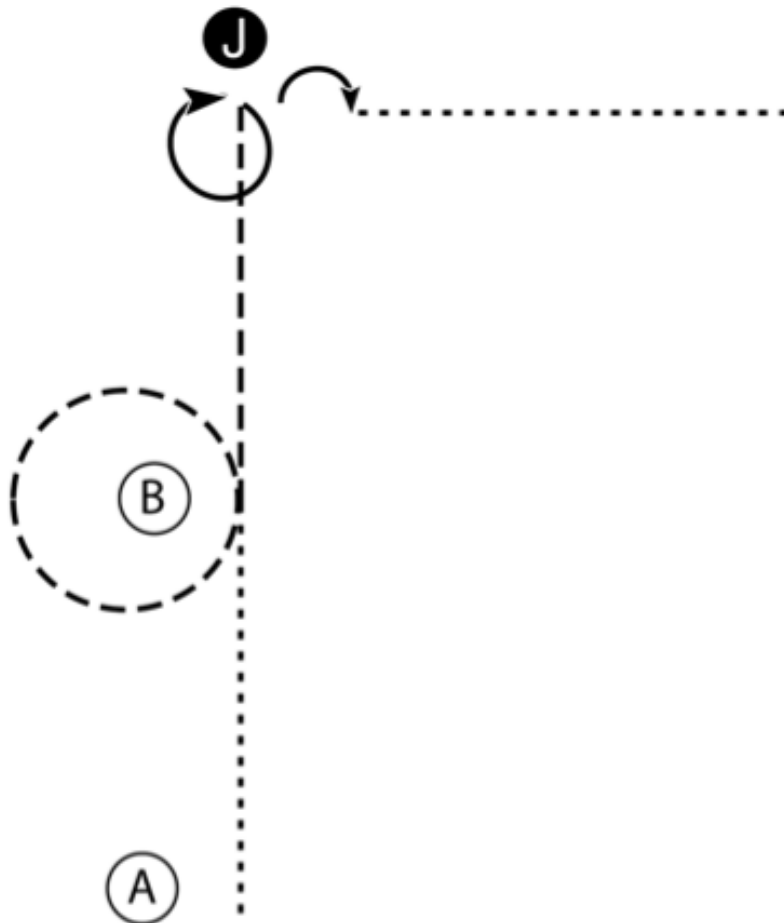
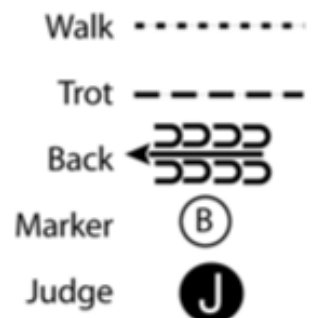


KAWARTHA APPALOOSA SHOW

Showmanship (all)

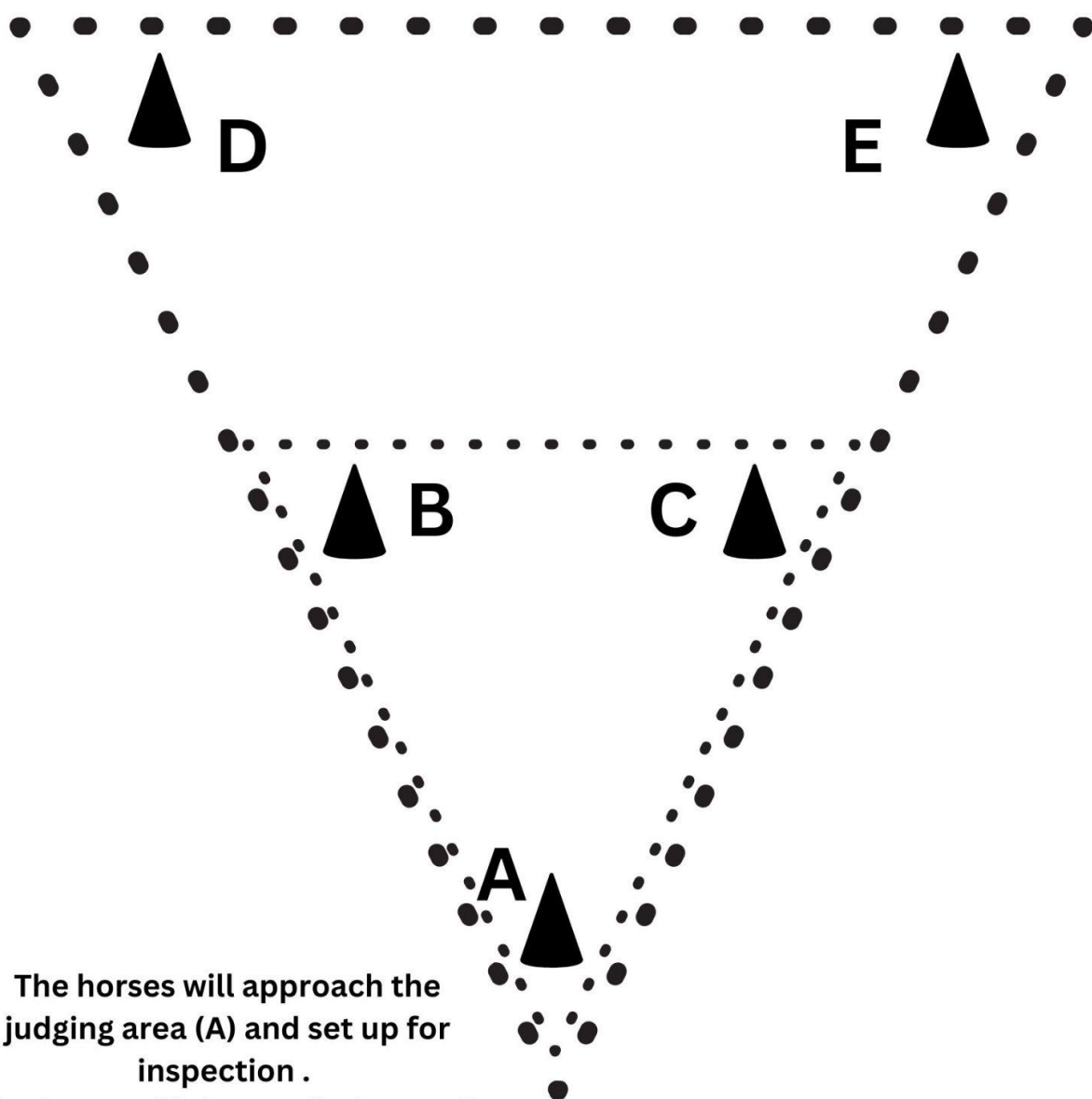


1. Walk from A to B.
2. At B trot. Trot a circle around B and continue to the Judge.
3. Stop and perform a 360 degree turn. Set up for inspection.
4. When dismissed perform a 90 degree turn.
5. Walk straight away from the Judge.



KAWARTHA APPALOOSA SHOW

Hunter In Hand

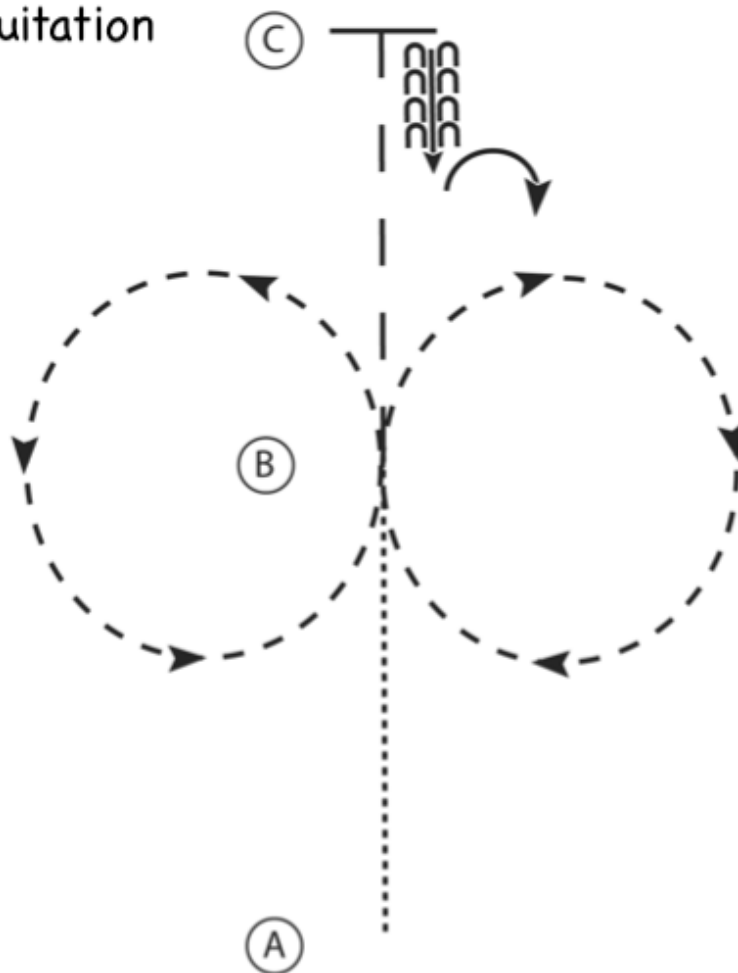


The horses will approach the judging area (A) and set up for inspection .

The horse will then walk the small triangle ABCA. The horse will continue on at a trot following the large ADEA.

KAWARTHA APPALOOSA SHOW

Walk/Trot Equitation

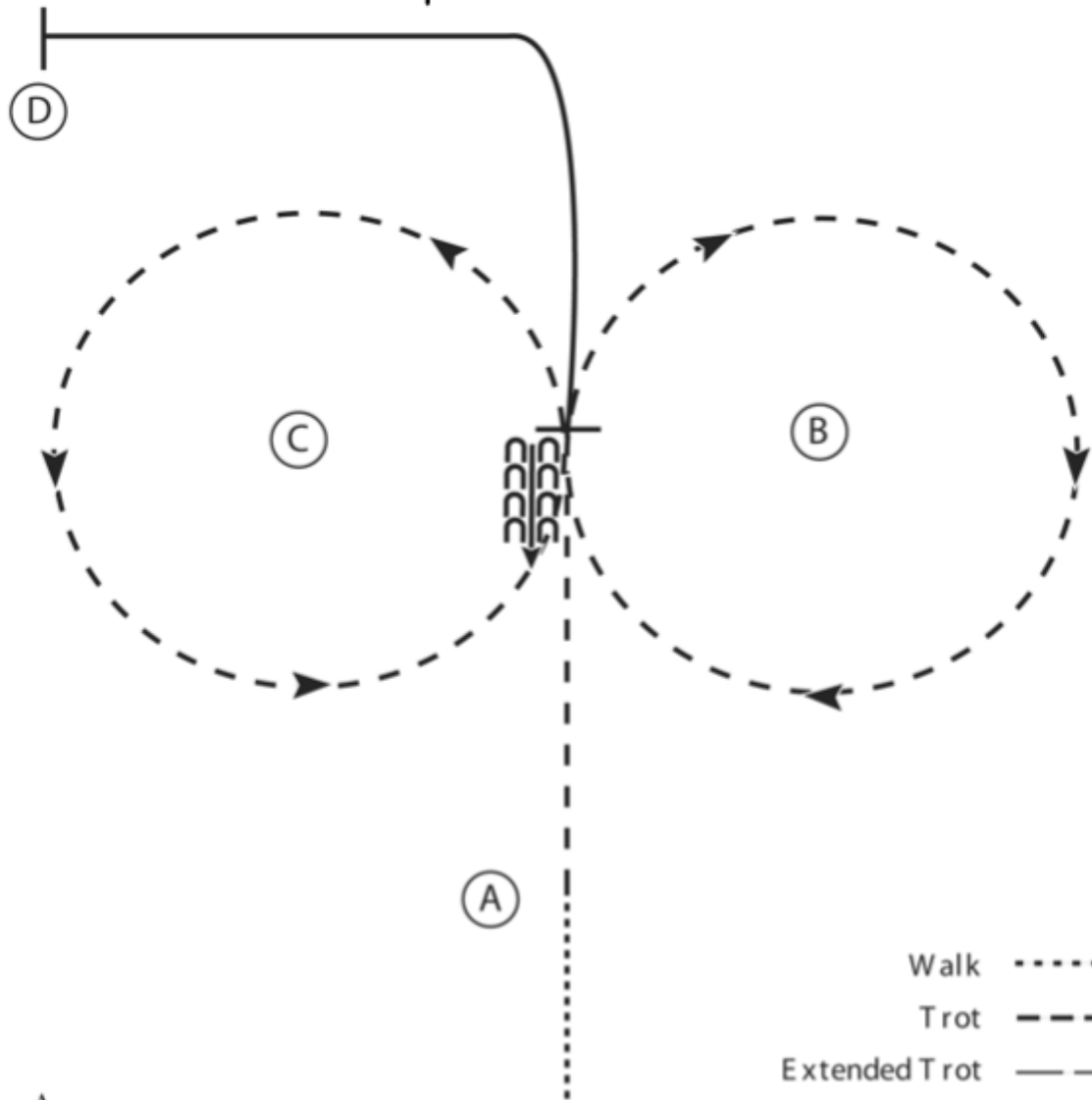


1. Walk A to B
2. Sitting trot circle to the right
3. Posting trot circle to the left
4. At B extend the trot to C
5. Stop at C and back 4 steps
6. Perform a 90 degree turn to the right

Walk
Trot	-----
Extended Trot	— — —
Canter	————
Leg Yield	
Lead Change	↗ ↘
Back	←←←←
Marker	(B)
Sidepass	← — — — →

KAWARTHA APPALOOSA SHOW

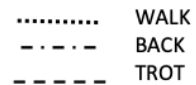
Equitation



1. Walk to A
2. At A trot to between B and C
3. Trot a figure eight beginning to the right
4. When between B and C stop and back 3 steps
5. Canter on the right lead to D
6. At D stop

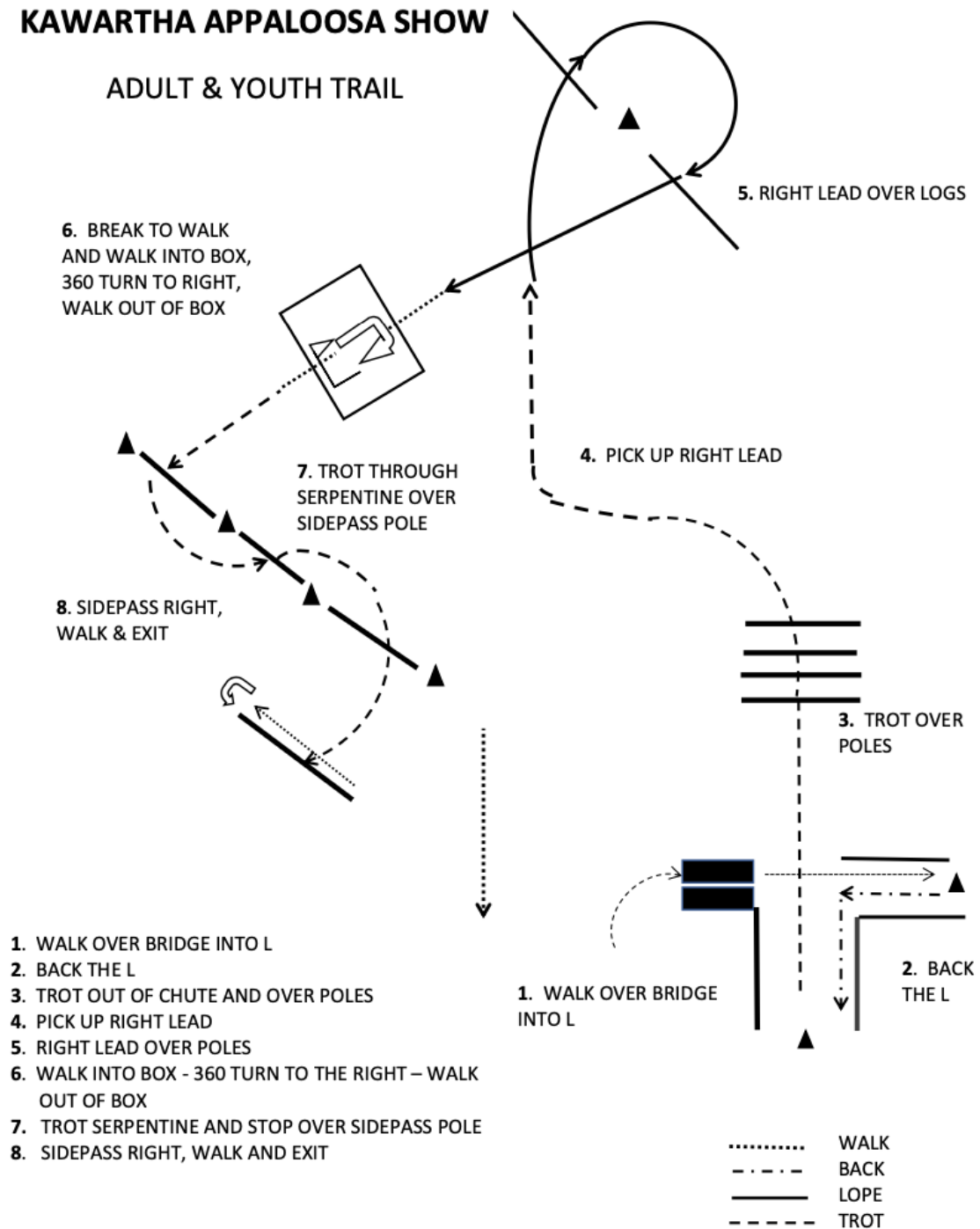
Walk
Trot	-----
Extended Trot	— — — —
Canter	—————
Leg Yield	
Lead Change	
Back	
Marker	(B)
Sidepass	

WALK/TROT TRAIL



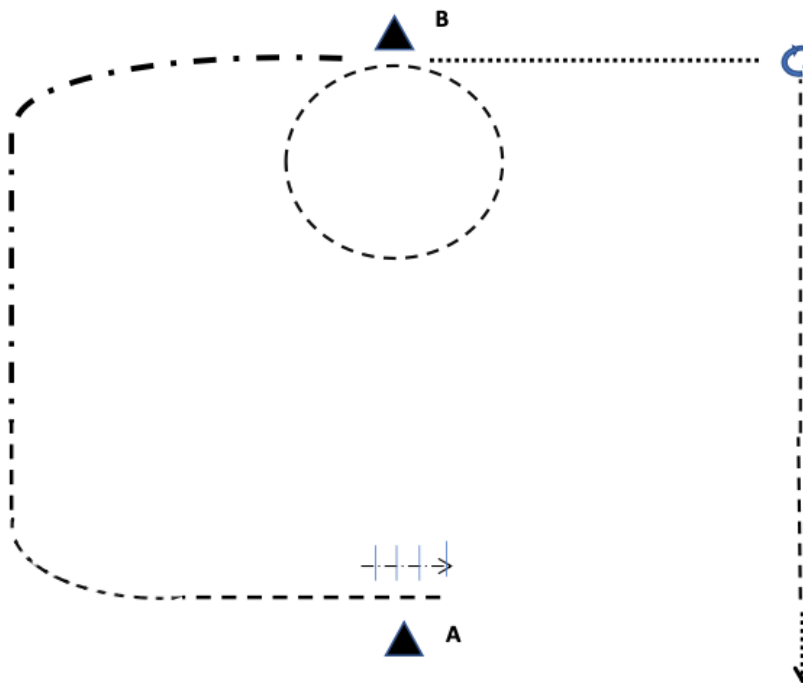
KAWARTHA APPALOOSA SHOW

ADULT & YOUTH TRAIL



KAWARTHA APPALOOSA SHOW HORSEMANSHIP

WALK TROT

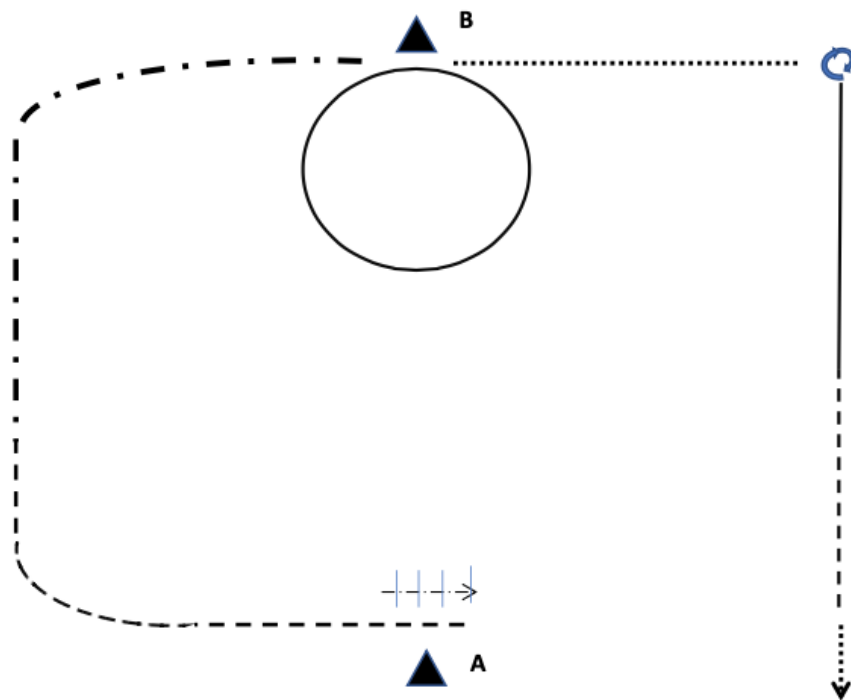


-➔ WALK
- ➔ JOG
- .. — ..➔ EXTENDED JOG
- ➔ LOPE

1. START AT A, BACK
2. JOG
3. EXTENDED JOG
4. JOG A CIRCLE
5. BREAK TO A WALK, EXECUTE $\frac{3}{4}$ TURN TO LEFT ON HAUNCHES
6. JOG TO POINT OPPOSITE A
7. STOP, HESITATE AND WALK OUT

KAWARTHA APPALOOSA SHOW

HORSEMANSHIP

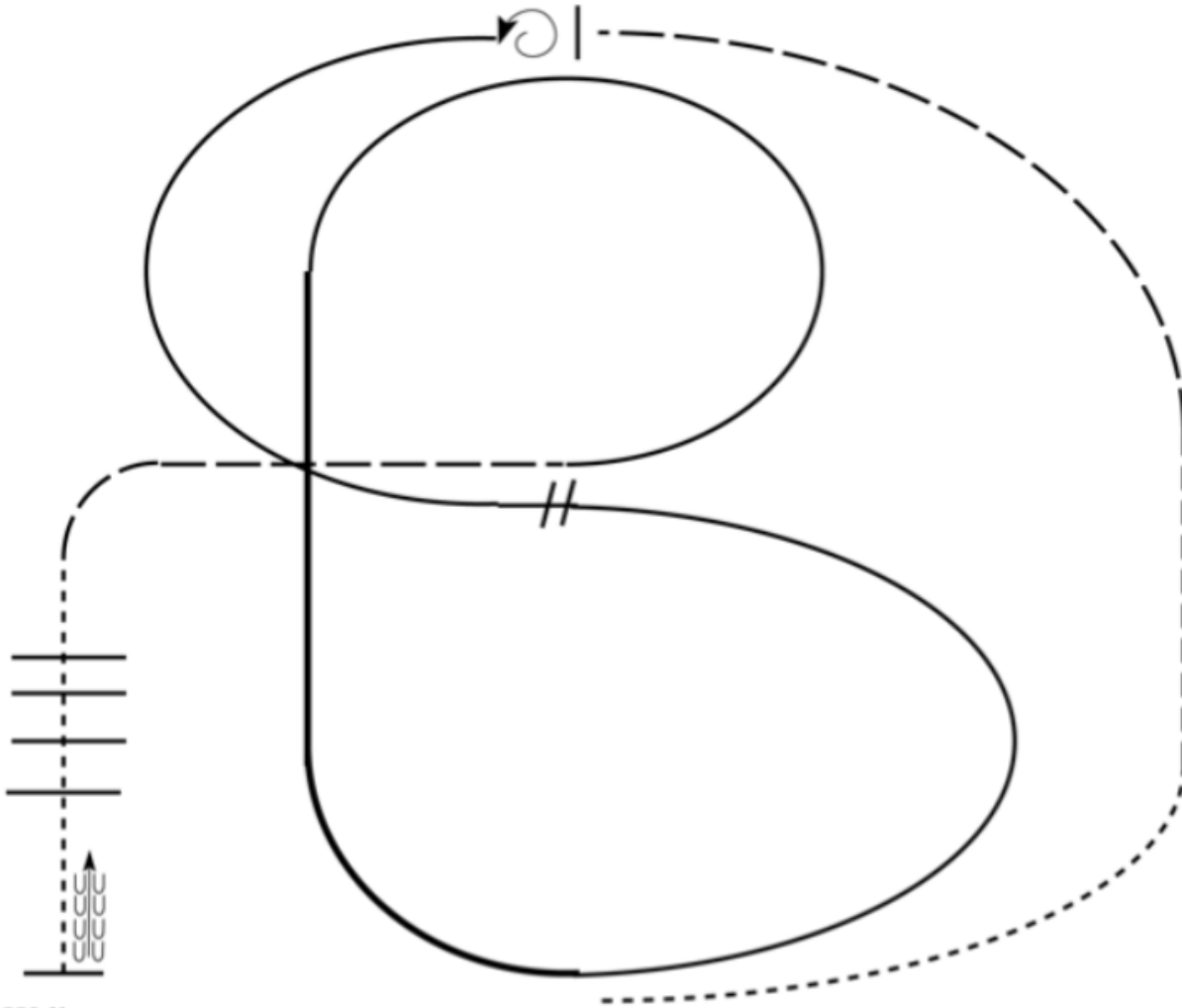


.....> WALK
-----> JOG
- . - . > EXTENDED JOG
————> LOPE

1. START AT A, BACK
2. JOG
3. EXTENDED JOG
4. LOPE RIGHT LEAD CIRCLE
5. BREAK TO A WALK, STOP, EXECUTE $\frac{3}{4}$ TURN TO LEFT ON HAUNCHES
6. LOPE LEFT LEAD HALFWAY TO POINT OPPOSITE A
7. BREAK TO JOG TO POINT OPPOSITE A, WALK OUT

KAWARTHA APPALOOSA SHOW

Ranch Riding



1. Walk
2. Trot
3. Extend the trot, at the top of the arena, stop
4. 360 degree turn to the left
5. Left lead 1/2 circle, lope to the center
6. Change leads (simple or flying)
7. Right lead 1/2 circle
8. Extended lope up the long side of arena (right lead)
9. Collect back to a lope around the top of the arena and back to center
10. Break down to an extended trot
11. Walk over poles.
12. Stop and back

Walk	-----
Jog	-----
Extended Jog	-----
Lope	-----
Lead Change	
Back	
Marker	

KAWARTHA APPALOOSA SHOW

Ranch Trail

